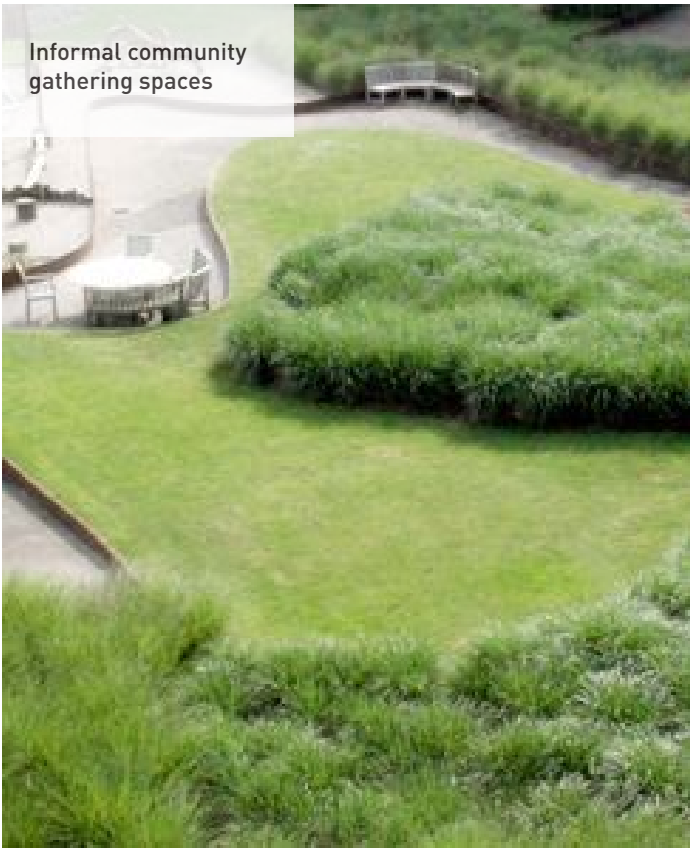
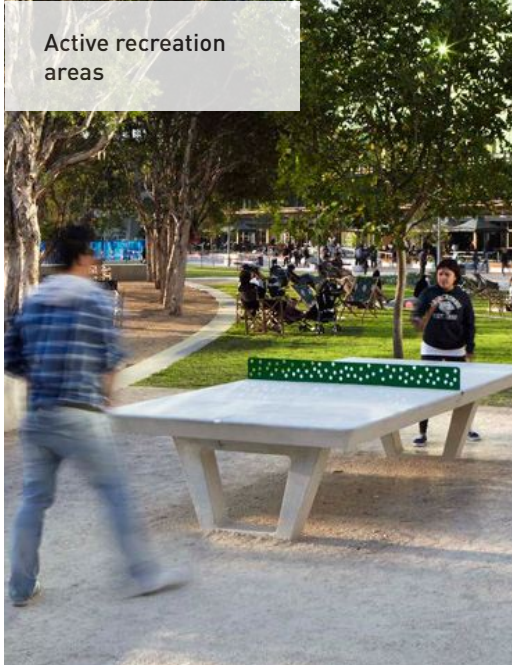


LANDSCAPE PRECEDENTS





1 GROUND FLOOR LANDSCAPE PLAN

- LEGEND

1/ Public walkway

2/ Building entrances

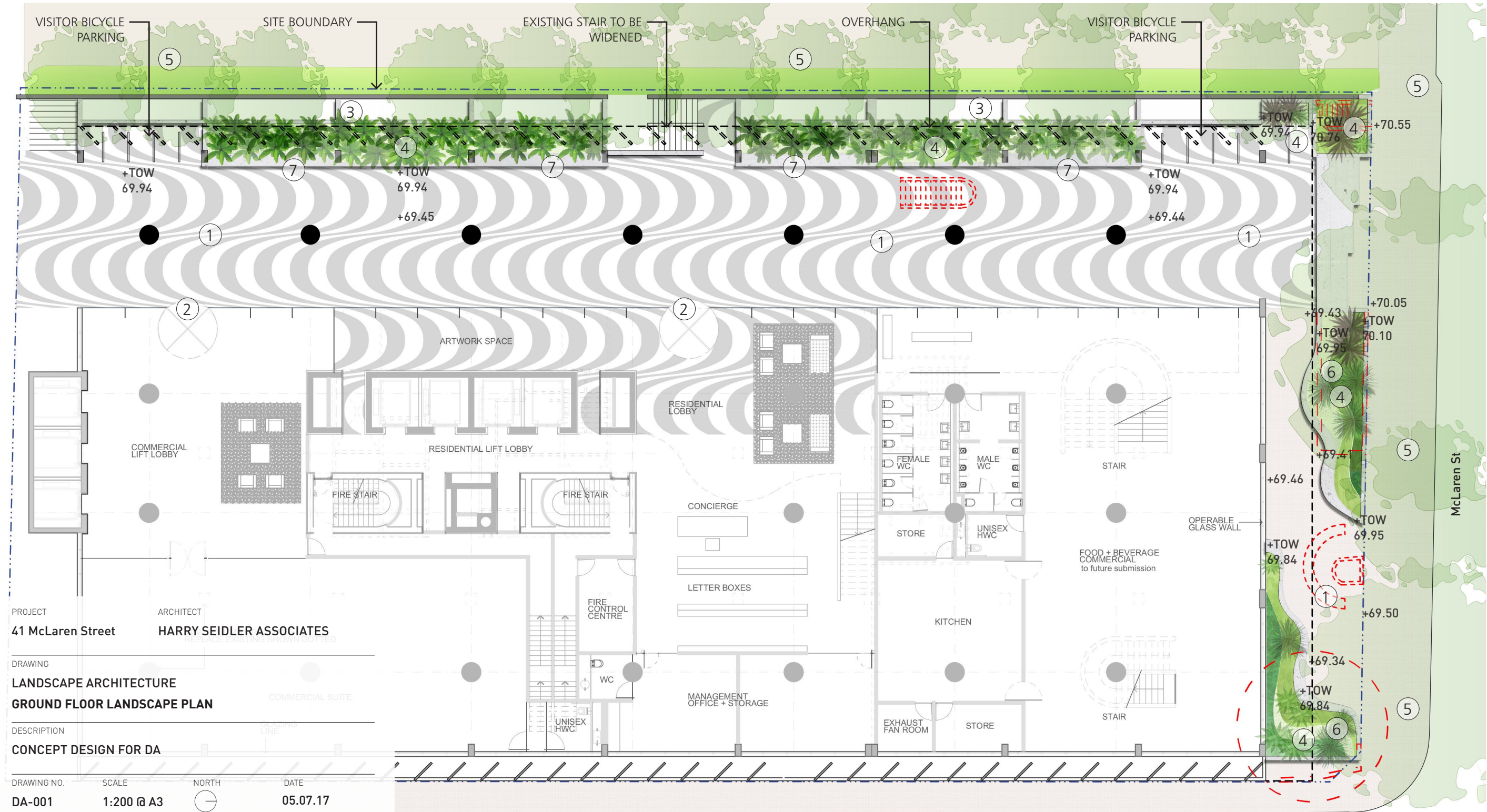
3/ Air intake grille

4/ New planted areas

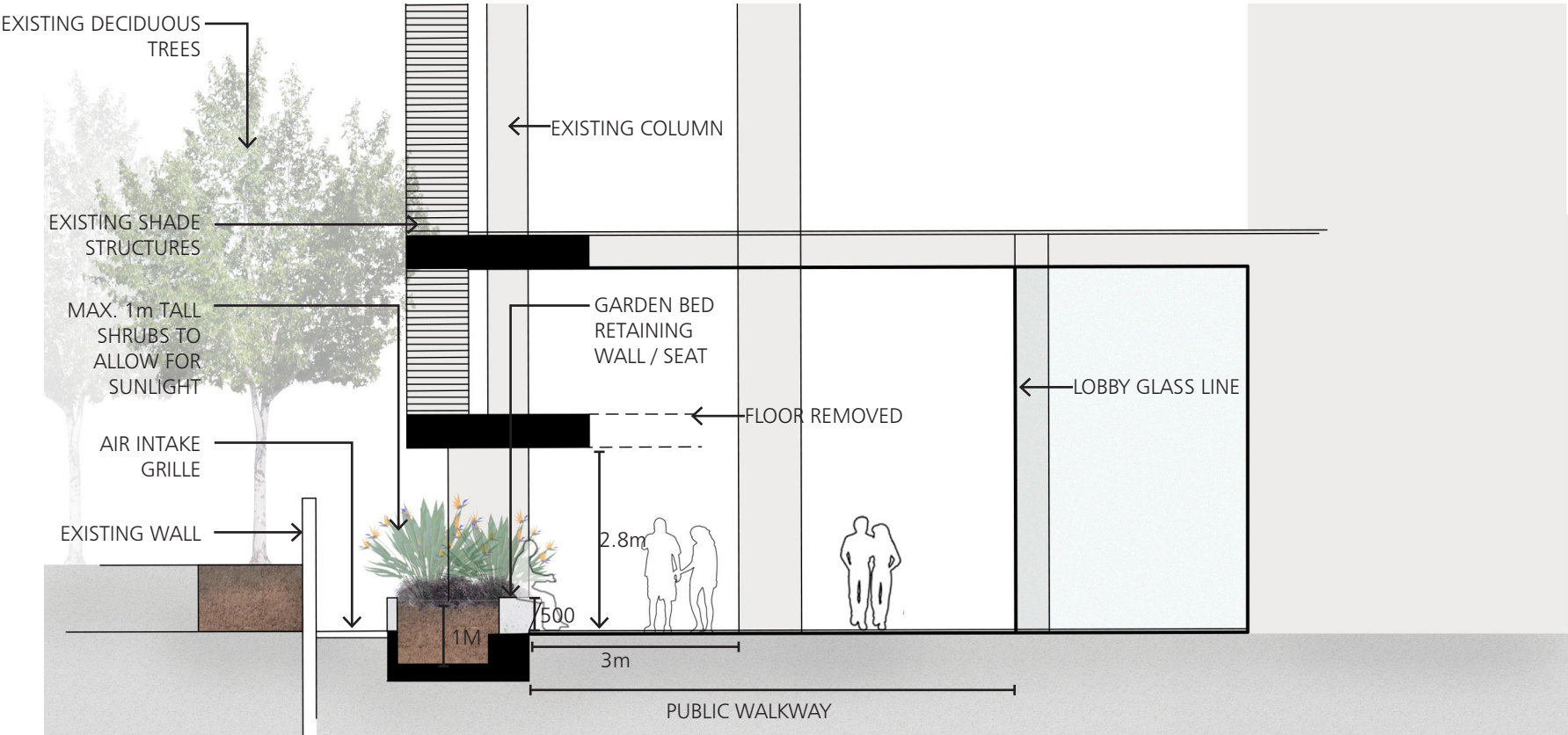
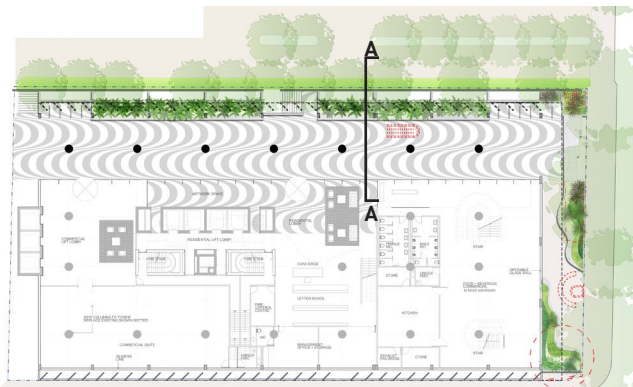
5/ Existing trees/vegetation

6/ Tree/vegetation removed

7/ New seating



2 GROUND FLOOR TYPICAL SECTION

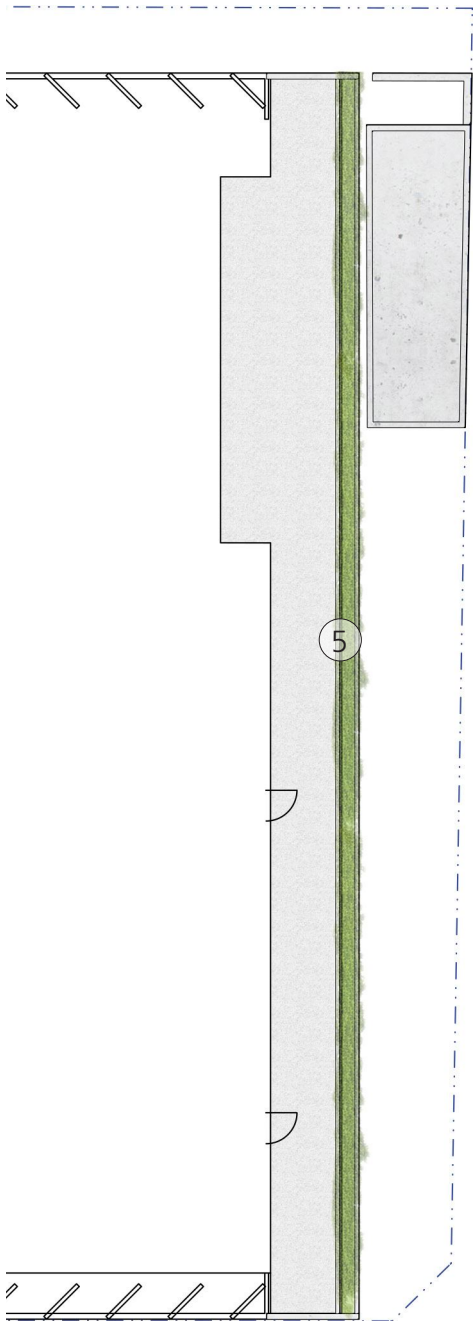


SECTION A

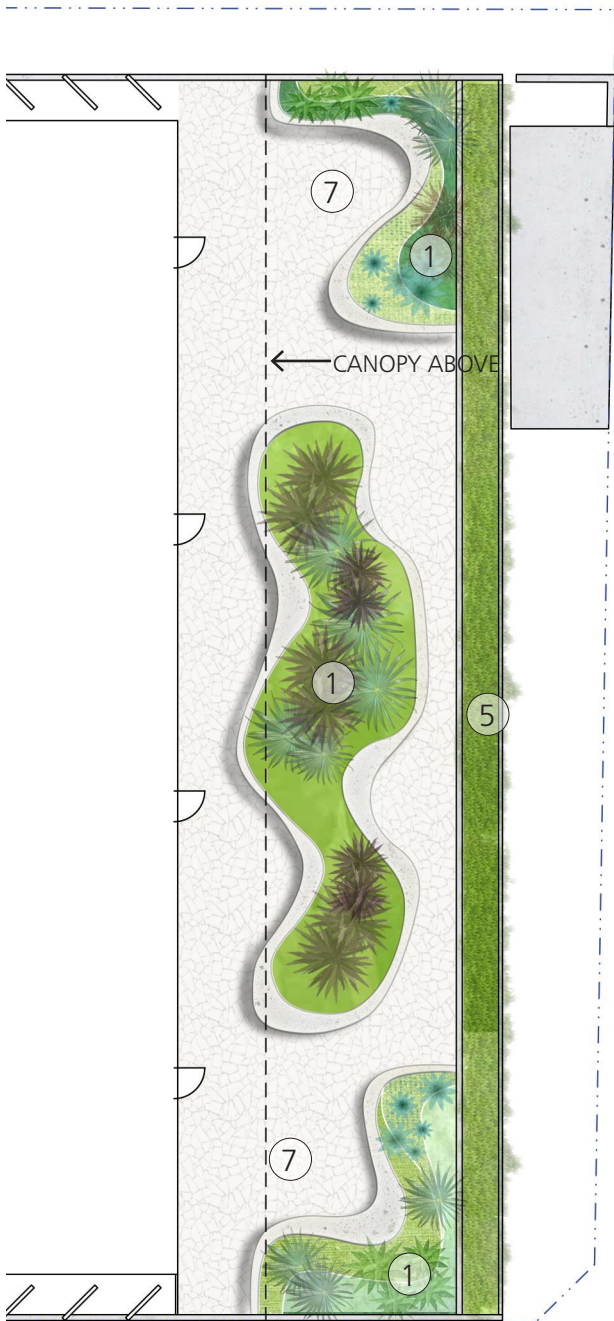
PROJECT	ARCHITECT		
41 McLaren Street	HARRY SEIDLER ASSOCIATES		
DRAWING			
LANDSCAPE ARCHITECTURE			
GROUND FLOOR TYPICAL SECTION			
DESCRIPTION			
CONCEPT DESIGN FOR DA			
DRAWING NO.	SCALE	NORTH	DATE
DA-002	1:100 @ A3		05.07.17



3 LEVELS 1, 2 & 3 LANDSCAPE PLANS



LEVEL 1



LEVEL 2



LEVEL 3

- LEGEND**
- 1/ Raised garden beds with concrete seating
  - 2/ Concrete retaining walls to provide seating areas as well as depth for new garden beds.
  - 3/ Entrance into garden - threshold moment
  - 4/ Low planting to allow for views across the balcony
  - 5/ Existing planter box to be retained with new planting
  - 6/ Moveable seating
  - 7/ Dynamic path creates comfortable seating nooks
  - 8/ Opportunity for outdoor activities such as a Ping Pong a table

PROJECT  
41 McLaren Street

ARCHITECT  
HARRY SEIDLER ASSOCIATES

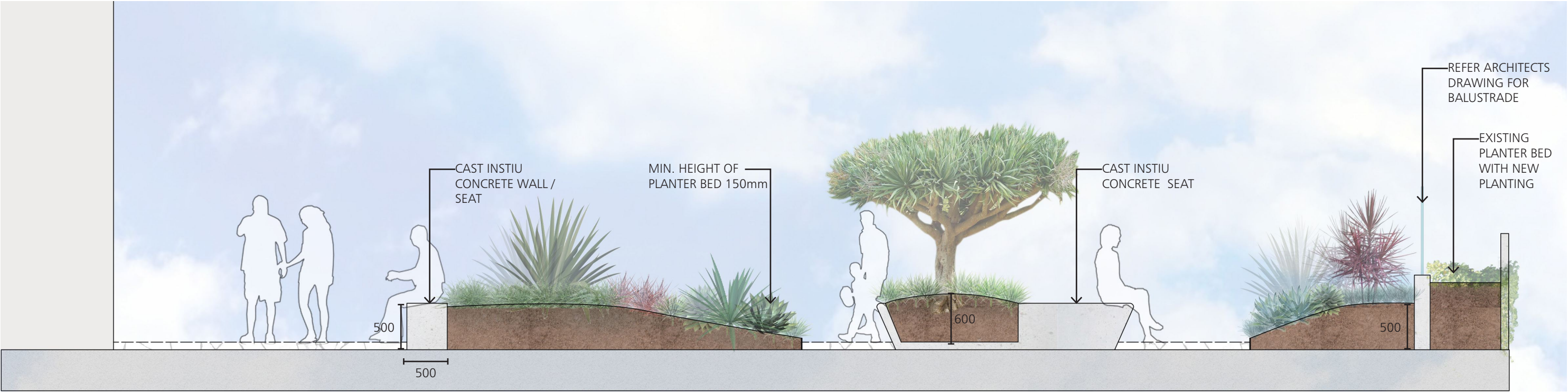
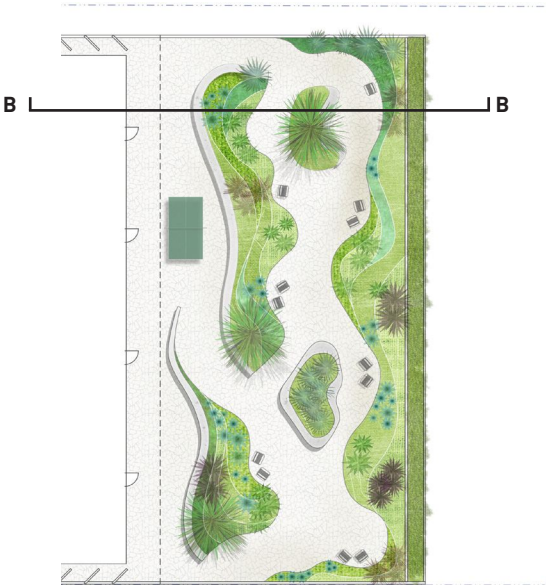
DRAWING  
LANDSCAPE ARCHITECTURE  
LEVELS 1, 2 & 3 LANDSCAPE PLAN

DESCRIPTION  
CONCEPT DESIGN FOR DA

DRAWING NO.	SCALE	NORTH	DATE
DA-003	1:200 @ A3		05.07.17



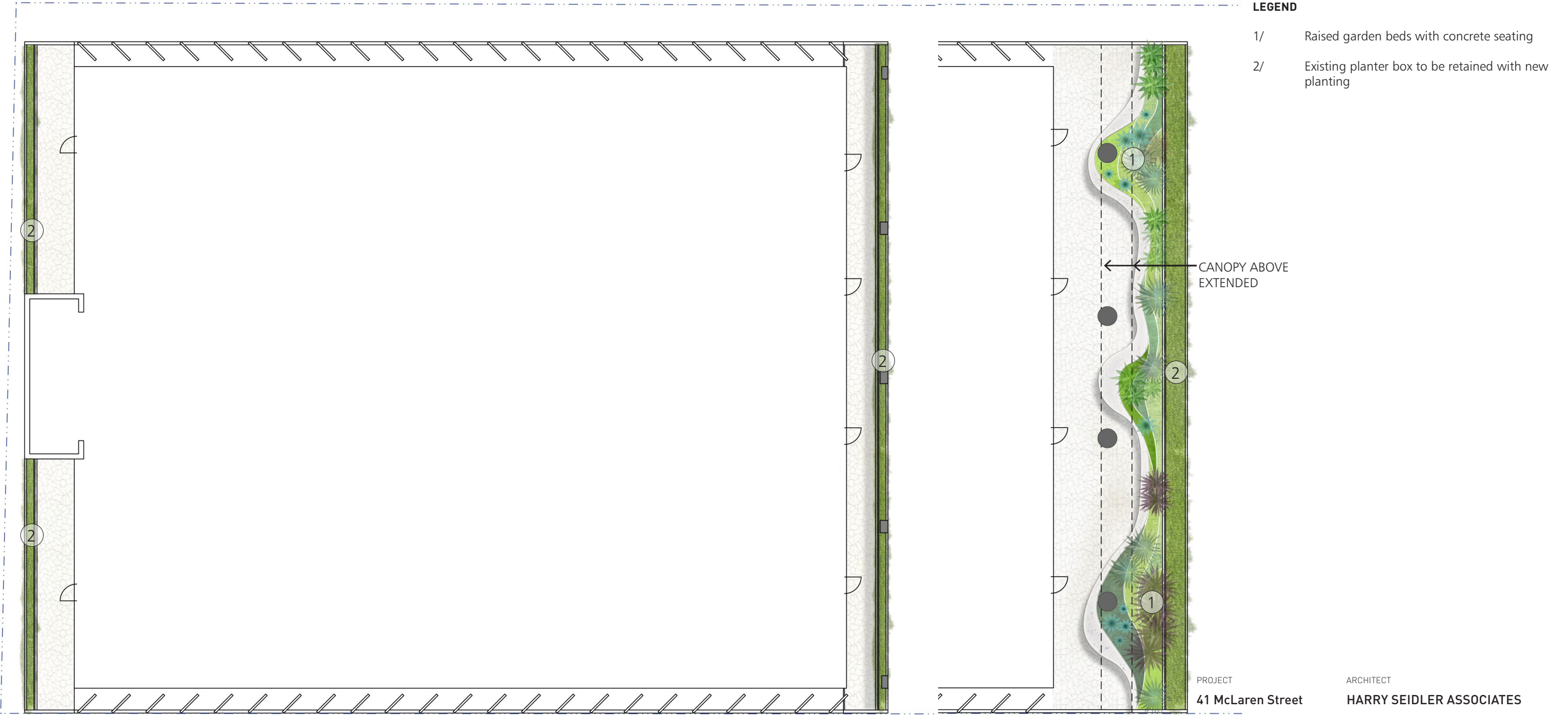
4 LEVEL 3 TYPICAL LANDSCAPE SECTION



SECTION B

PROJECT	41 McLaren Street	ARCHITECT	HARRY SEIDLER ASSOCIATES
DRAWING	LANDSCAPE ARCHITECTURE LEVELS 3 SECTION		
DESCRIPTION	CONCEPT DESIGN FOR DA		
DRAWING NO.	DA-004	SCALE	1:50 @ A3
		NORTH	
		DATE	05.07.17

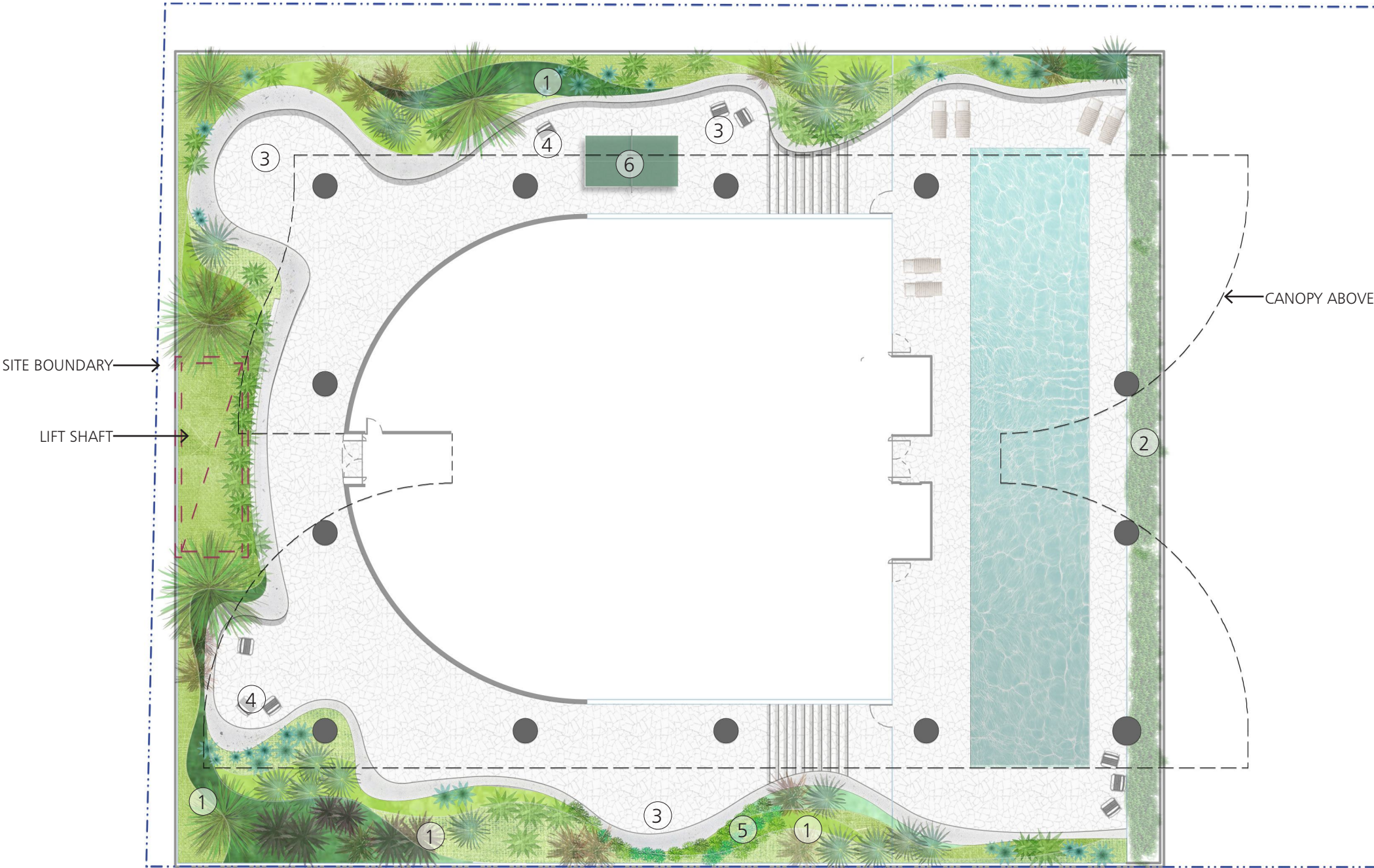
5 LEVELS 4, 5 & 6 LANDSCAPE PLANS



DRAWING			
LANDSCAPE ARCHITECTURE			
LEVELS 4 & 5 and 6 LANDSCAPE PLAN			
DESCRIPTION			
CONCEPT DESIGN FOR DA			
DRAWING NO.	SCALE	NORTH	DATE
DA-005	1:200 @ A3		05.07.17



6 PLANT & RECREATIONAL ROOM LANDSCAPE PLANE



LEGEND

- 1/ Raised garden beds with concrete seating
- 2/ Replicate the existing planter beds on the current building.
- 3/ Dynamic edges creates comfortable seating nooks
- 4/ Moveable seating
- 5/ Community kitchen garden
- 6/ Opportunity for outdoor activities such as a Ping Pong tables

PROJECT  
41 McLaren Street

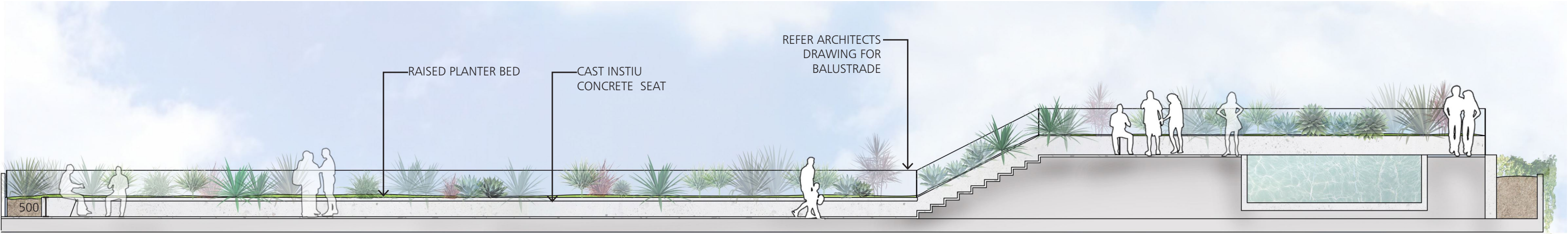
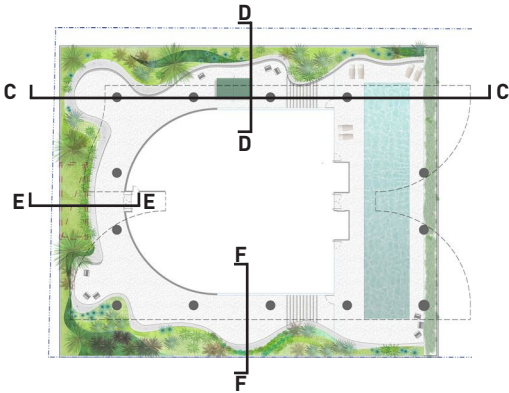
ARCHITECT  
HARRY SEIDLER ASSOCIATES

DRAWING  
LANDSCAPE ARCHITECTURE  
PLANT AND RECREATIONAL ROOM LANDSCAPE PLAN

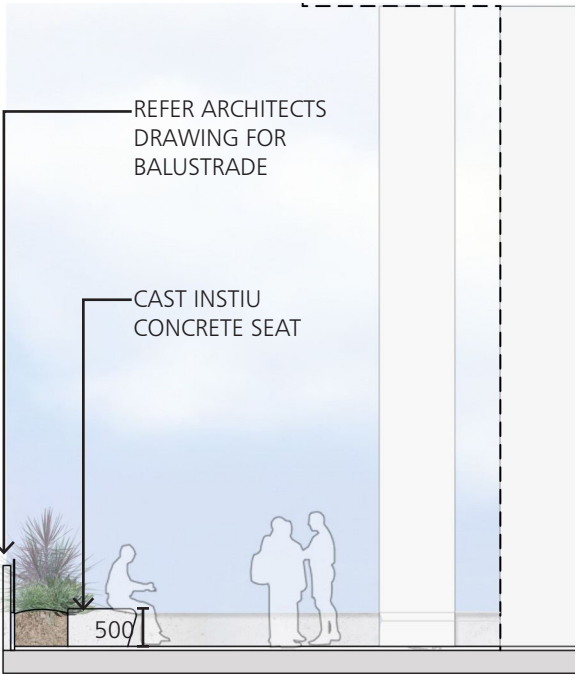
DESCRIPTION  
CONCEPT DESIGN FOR DA

DRAWING NO. SCALE NORTH DATE  
DA-006 1:200 @ A3 05.07.17

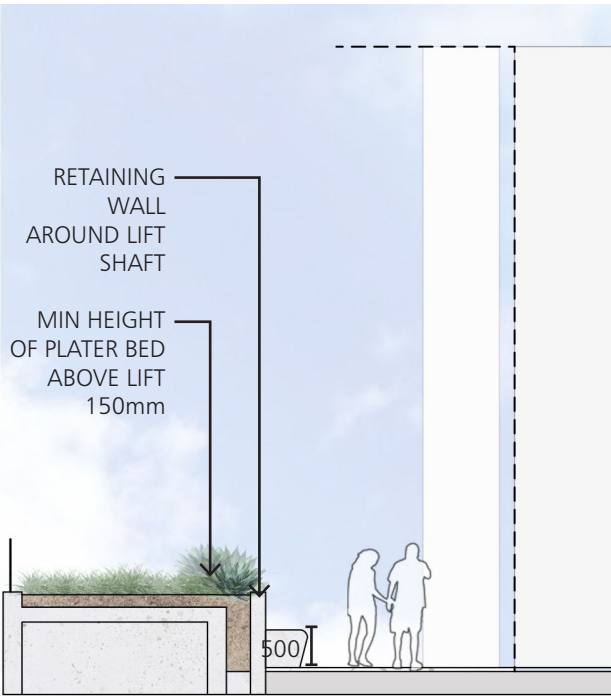
7 PLANT & RECREATIONAL ROOM SECTIONS



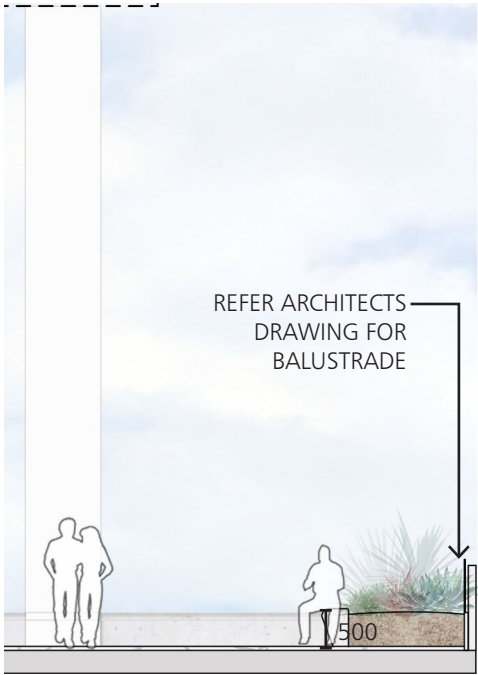
SECTION C



SECTION D



SECTION E



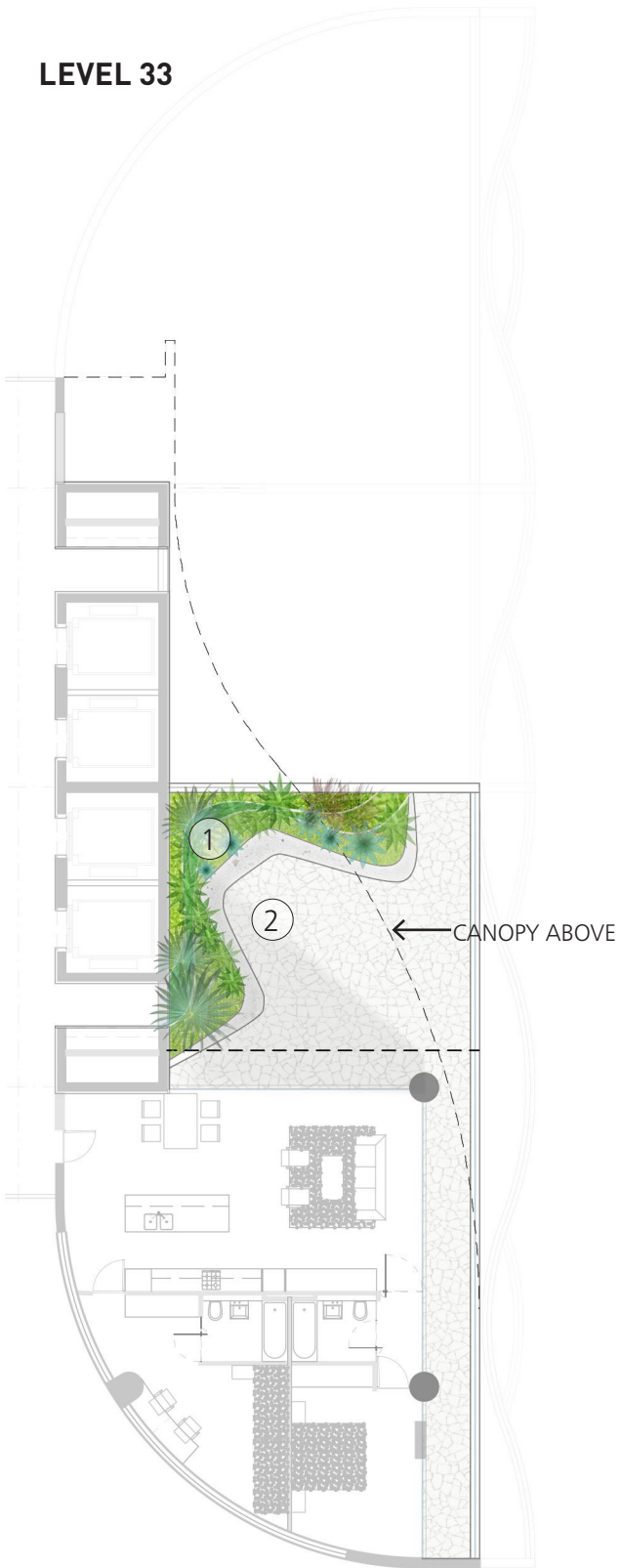
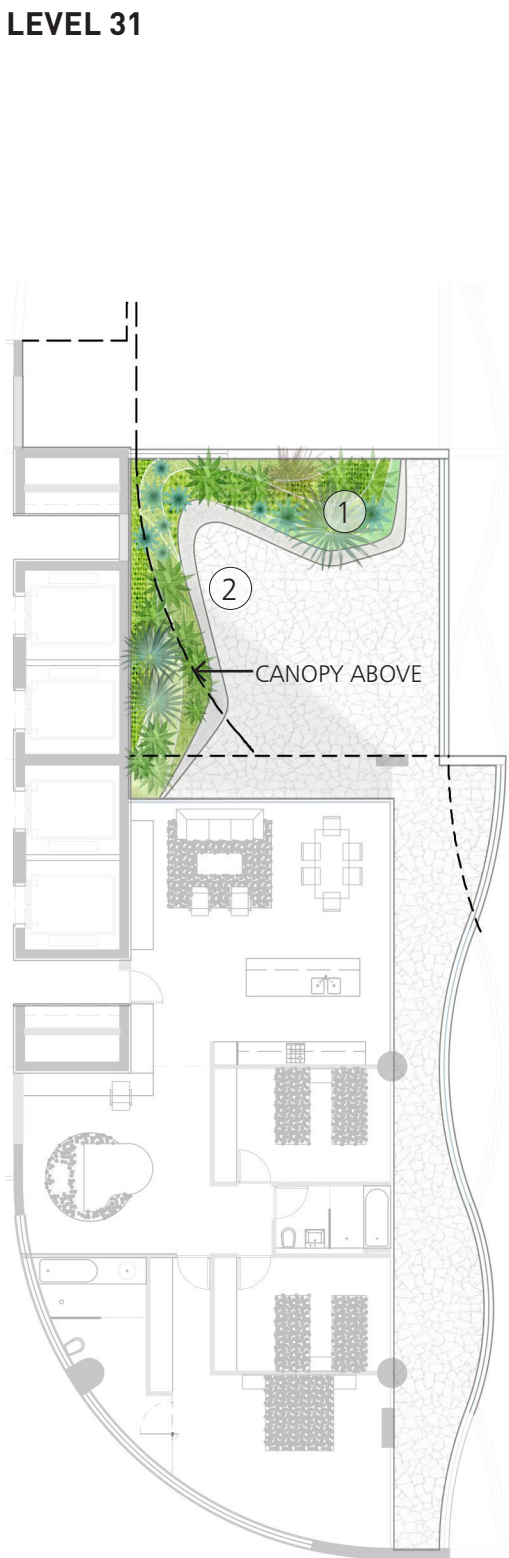
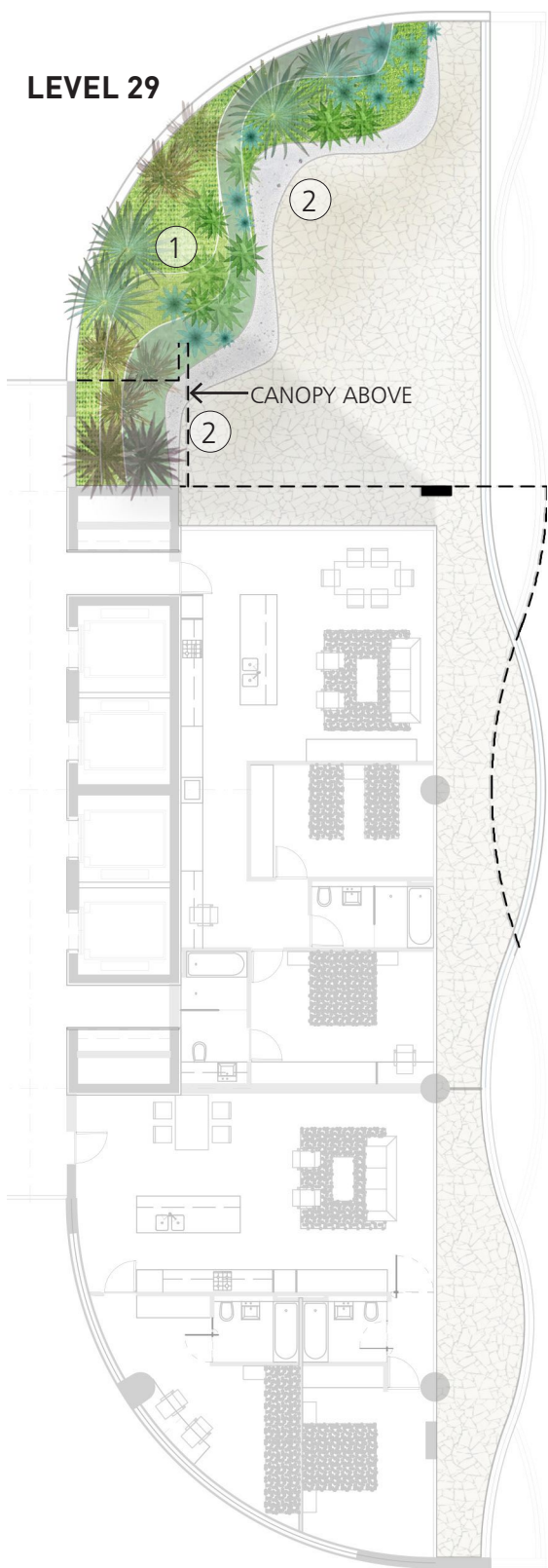
SECTION F

PROJECT	41 McLaren Street	ARCHITECT	HARRY SEIDLER ASSOCIATES
DRAWING	LANDSCAPE ARCHITECTURE		
	PLANT AND RECREATIONAL ROOM SECTIONS		
DESCRIPTION	CONCEPT DESIGN FOR DA		
DRAWING NO.	DA-007	SCALE	1:100 @ A3
		NORTH	
		DATE	05.07.17




8    LEVEL 29, 31 & 33 LANDSCAPE PLANS

PRIVATE BALCONY'S



- LEGEND
- 1/      Raised garden beds with concrete seating
- 2/      Dynamic edges creates comfortable seating nooks

PROJECT	ARCHITECT		
41 McLaren Street	HARRY SEIDLER ASSOCIATES		
DRAWING			
LANDSCAPE ARCHITECTURE			
PRIVATE BALCONYS - LEVELS 29, 31 & 33 LANDSCAPE PLAN			
DESCRIPTION			
CONCEPT DESIGN FOR DA			
DRAWING NO.	SCALE	NORTH	DATE
DA-008	1:200 @ A3		05.07.17



9 INDICATIVE PLANTING PALETTE

GROUND COVER PLANTS



Rhagodia spinescens



Ophiopogon japonicus



Helichrysum petiolare



Ophiopogon planiscapus 'Nigrescens'



Myoporum parvifolium 'Yareena'



Festuca glauca 'Elijah Blue'



Cassa Blue Dianella



Silver Streak Flax Lilly Dianella



Senecio 'blue balls'

ACCENT PLANTS



Dracaena draco



Echeveria lilacina



Agave attenuata



Aloe vera



Alcantarea imperialis

HEDGING PLANTS



Agave tequilana australia



Helichrysum petiolare



Cordyline Australis



Helichrysum petiolare

CODE	COMMON NAME	BOTANICAL NAME	HEIGHT AND SPREAD (m)	POT SIZE
GROUND COVERS				500L
CB	Cassa Blue	Cassa Blue Dianella	0.5 x 0.4	
FG	Blue Fescue	Festuca glauca ‘Elijah Blue’	0.2 x 0.3	
HP	Liquorice Plant	Helichrysum petiolare	0.6 x 1.5	
MP	Creeping boobialla	Myoporum parvifolium “Yareena”	0.1 x 1	
OP	Dwarf Mondo Grass	Ophiopogon planiscapus ‘Nigrescens’	0.25 x 0.3	
OJ	Dwarf Mondo Grass	Ophiopogon japonicus	0.2 x 0.2	
RS	Spiny Saltbush	Rhagodia spinescens	2 x 1	
SB	Blue Balls Sedum	Senecio ‘blue balls’	0.5 x 2	500L
SS	Silver Streak	Silver Streak Flax Lilly Dianella	0.5 x 0.5	
ACENT PLANTS				
AA	Spineless Century Plant	Agave attenuata	0.7 x 1.5	
AT	Blue Agave	Agave tequilana australia	0.7 x 2	
AI	Empress of Brazil	Alcantarea imperialis	1.5 x 1.5	
AV	Aleo Vera	Aloe vera	0.5 x 0.6	
CA	Cabbage Tree Purple	Cordyline Australis	0.5 x 1	
DD	Dragon Tree	Dracaena draco	2.5 x 3	500L
EI	Ghost Echeveria	Echeveria lilacina	0.2 x 0.25	
HEDGING PLANTS				
HC	Ivy	Hedera canariensis Gloire de Marengo	2 x 5.5	
SR	Bird of Paradise	Strelitzia reginae	1.2 x 1.2	